



2022-2023  
School Year

Annual Report

# TABLE OF CONTENTS



03

## 2022-2023 YEAR SNAPSHOT

An overview of Inspire  
Academy in SY2223

## FINANCIAL OVERVIEW

Inspire's SY2223 Donor Honor  
Roll

04



06

## MASTERY OF KNOWLEDGE & SKILL

Standard academic progress

## CHARACTER & ENGAGEMENT

Possibly the most important  
topic with SY2223 Inspiring  
Scholars

07



08

## HIGH QUALITY WORK

A deeper approach to  
learning

# INSPIRE ACADEMY

A SCHOOL OF INQUIRY



Inspire Academy believes that education is a right. We believe *all* students should have access to quality education and opportunities. We are proud to be a diverse school, and we do our best to celebrate our differences. Here is a snapshot of our student body demographics from 2022-2023.

# 100%

of students daily receive

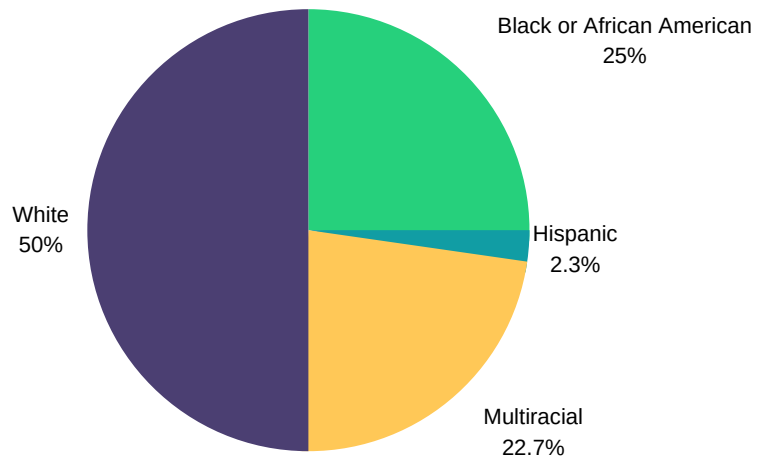
## Free Breakfast, Lunch, & Fresh Produce Snack!

### STUDENT-STAFF NUMBERS

**181** K-8 STUDENT ENROLLMENT (+10 PK)

**20** STUDENTS PER CLASS (AVG. CLASS SIZE)

**16:1** STUDENTS TO TEACHER RATIO (INCLUDES SPECIALS AND SPED)



### MILESTONES:

Obtained a 15 year charter contract from Education One at Trine University.

Recovered enrollment to pre-pandemic numbers!

Expanded leadership & adopted competitive school admin wages, employing a principal and an executive director to ensure sustainability for accomplishing the school's mission.

### DIVERSITY & INCLUSION

**23%** STUDENTS QUALIFIED FOR SPECIAL EDUCATION

### MOBILITY

**47%** STUDENT MOBILITY (% OF MIDYEAR STUDENT TRANSFERS IN OR OUT)

**77%** TEACHER RETENTION FROM 2022-2023 TO 2023-2024

2022-2023

# FINANCIAL OVERVIEW

The 2022-2023 school year was yet another year filled with projects to improve the building for Inspire Academy – A School of Inquiry. Grant funding from the Indiana Department of Homeland Security allowed Inspire Academy to add additional safety features to the building, both inside and out. Interior doors were re-keyed and automatic interior door closures were added to improve security for all classrooms, as well as our common areas where students and staff tend to gather. Security film was also added to the front of our school which provides an extraordinary safety feature with a touch of school spirit!

Federal Elementary and Secondary School Emergency Relief Funds continued into the 2022- 2023 school year and allowed Inspire Academy to provide our students with new school-issued devices to assist them with their learning when not involved in hands-on field work. These same funds were essential for our after-school tutoring program that provided an opportunity for students to strengthen their mastery of knowledge and skills while addressing learning loss associated with COVID-19.

In the coming school year, Inspire Academy will need your continued generosity and support to proceed with revitalizing our campus. Our hopes in revamping our facility would be to increase functionality and enroll more of the young minds we aspire to excite. We have been awarded funds from the Charter School Facilities Incentive Grant for the next phase of our roof and will move forward with the cafeteria HVAC project with the remainder of our pandemic relief funds. Inspire Academy's focus on the school building indicates our commitment to both our students and our community to provide students with the desire to become lifelong learners for years to come.



## EXPENDITURES

**\$2,843,457.46**

TOTAL EXPENDITURES IN  
2022-2023

**\$14,887.21**

EXPENDITURES PER  
STUDENT

**\$43,747.20**

AVERAGE TEACHER  
SALARY



# MASTERY OF KNOWLEDGE & SKILLS

## STATE ASSESSMENTS - ILEARN & IREAD 2023

**ILEARN English: 6.2% Proficient**    **ILEARN Math: 8.4% Proficient**

**IREAD3: 33% Proficient**    Due to an error in the summer retake window, a higher % of students than indicated are likely proficient readers.

*The reality educational institutions are facing: widespread interruptions to formal education during the pandemic are going to take much longer to recover than we originally anticipated!* Accountability surrounding test outcomes remains suspended for all Indiana schools in response to this unprecedented extended period of low proficiency rates in scores statewide. In alignment with historic societal patterns, students in poverty were hit harder than students in well-resourced environments.

We often follow a “so what/now what” protocol in educational problem-solving. We invite you to engage this question set by reading on! *So what?* Regardless of nationwide and statewide trends, the reality remains that our students need increased academic support and intervention to be prepared for future career opportunities. *Now what* is Inspire going to do about this?

We are taking a multi-year, multi-pronged approach to these challenges.

- ***We are expanding our leadership team.*** During SY2223, we resumed the principal position and welcomed Mr. Patrick Fassnacht to the Inspire crew. This structure was put on hold during the pandemic, but we are now able to sustain a principal to focus on managing daily operations and instructional leadership and an executive director to focus on partnerships, development, and strategic planning. Slowed progress is common during a leadership transition, as leaders face their own learning curves and take time to assess the needs of their new roles. We saw this slowing and are now seeing the re-acceleration, and it is exciting! We also began the addition of a data coach during SY2223 and are expanding that role to a full-time data coach and testing coordinator role. In SY2223, we also joined the Indiana Literacy Cadre. This program supports (both financially and through training) the addition of a full-time early literacy coach at Inspire.
- ***We have changed authorizers!*** As the charter movement matures, more research indicates that the quality and approach of the charter authorizer impacts the quality of the school. We have transitioned to a charter authorizer who takes a hands-on tiered approach to supporting schools, so Education One from Trine University is now in our classrooms monthly, providing feedback and guidance on next steps for school leadership. We are also engaging in a Transition to Teaching partnership with Trine University to support and train seasoned professionals who want to move from other sectors to serve kids and prepare the next generation with the skills needed for success.



**Patrick Fassnacht, Principal**

## ACADEMIC PROFICIENCY

100% of Inspire students complete ELA and Math at their grade level each year. Students also complete courses in science, social studies, and habits of scholarship. In addition to core content, students are offered electives such as physical education, art, personal finance, writing center, book club, and African-American studies.

100% of Inspire teachers are certified employees who teach the subject area for which the teacher is certified and holds a license. During the 2022-2023 school year, one classroom was taught by a Teaching Fellow serving as a long term substitute for the full year, and one classroom was taught by a long term substitute for one semester.

## TECHNOLOGY IN THE CLASSROOM

At Inspire Academy, students are provided with a device that is used only by them for the school year. Each quarter, students create authentic products, often integrating word processing and digital presentation skills, to demonstrate their learning. We also utilize digital standards-based, adaptive learning programs such as Achieve3000 and SmartyAnts for practice, assessment, and integration of content about current societal issues.

During the 2022-2023 school year we maintained 1:1 technology for students, transitioned all K-5 ELA curriculum to fully digital, with the option for K- 2 teachers to use paper equivalent and all 6-8 curriculum to fully digital. ,



# CHARACTER & ENGAGEMENT



## Habits of Inspiring Scholars

At Inspire Academy, we hold that success, in both school and life, is contingent on developing strong, healthy habits. We see the need to directly teach students our Habits of Scholarship now more than ever! Students receive grades on the progress reports for these habits so that parents and students alike can see if the foundational habits are in place to achieve a successful and fulfilling life ahead.

In May 2023, we honored 39 students and staff as Inspiring Scholars who model for us what these Habits of Scholarship look like in daily life. Below is a break down of numbers honored for consistent mastery of each habit:

Joy - 5 students, 1 staff

Empathy - 5 students

Perseverance - 5 students, 3 staff

Integrity - 1 student, 2 staff

Curiosity - 6 students

Quality - 7 students, 2 staff

---

## Attendance Data

Attendance Rate

**87%**

Attendance is another area that has continued to lag behind in a post pandemic world. Based on the reality that the attendance rate did not increase from SY2122 to SY2223, Inspire Academy is resuming attendance contests and initiatives in SY2324 that were common before the pandemic but paused for health purposes. In addition, Inspire Academy is increasing focus on re-engaging students and families in the learning process.

**Chronic absenteeism (students absent for 10% of the year or more): 90**

**Chronic truancy (students with more than 10 unexcused absences): 24**

---

## School Safety

In the 2022-2023 school year Inspire Academy had 0 instances of students arrested on school property, 2 incidents in which a student brought in an object that could be used as a weapon; 0 instances of battery; and 2 instances of bullying as defined under IC 20-34-6. The number of expulsions was 3 and the number of suspensions was 53 for the year.

# HIGH QUALITY WORK



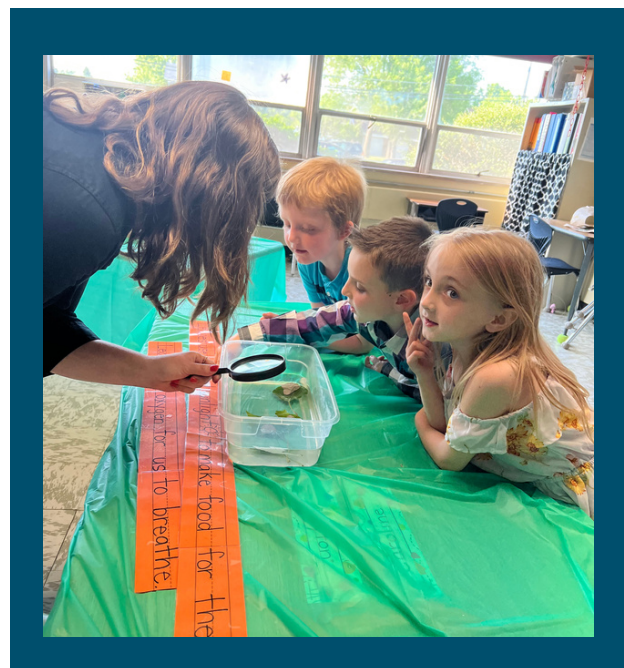
At Inspire Academy, student work is evaluated according to three important attributes: Complexity, Authenticity, and Craftsmanship. We want to showcase student achievement through high quality student work that exhibits skills and knowledge required for college and career success.

*\*This is not an exhaustive list of the High-Quality Work created during the 2021-2022 school year, but is intended to highlight student achievement at various stages of student development.*

## **PURPLE DEN: PK - 1** **FOCUS: SCIENCE OF READING**

Inspire Academy has thoroughly aligned all curriculum and instruction expectations to align with the science of reading. We understand that language development is systematic, and we walk every child through the stages of phonemic development with intention.

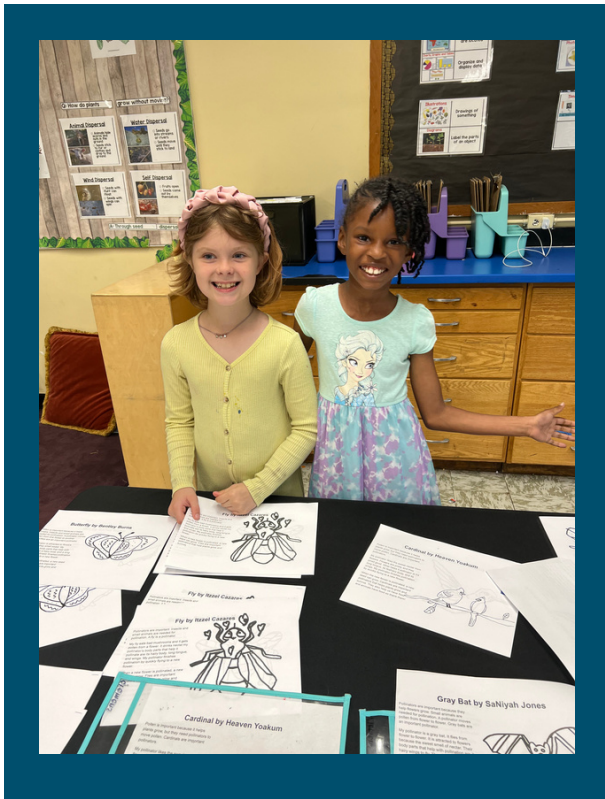
To ensure rigor and inspiring experiences while learning to read, even our youngest students create authentic products as part of their expeditions. For example, our 1st crew created “Feathered Friend Savers” to put on windows to prevent birds from injury flying into glass.



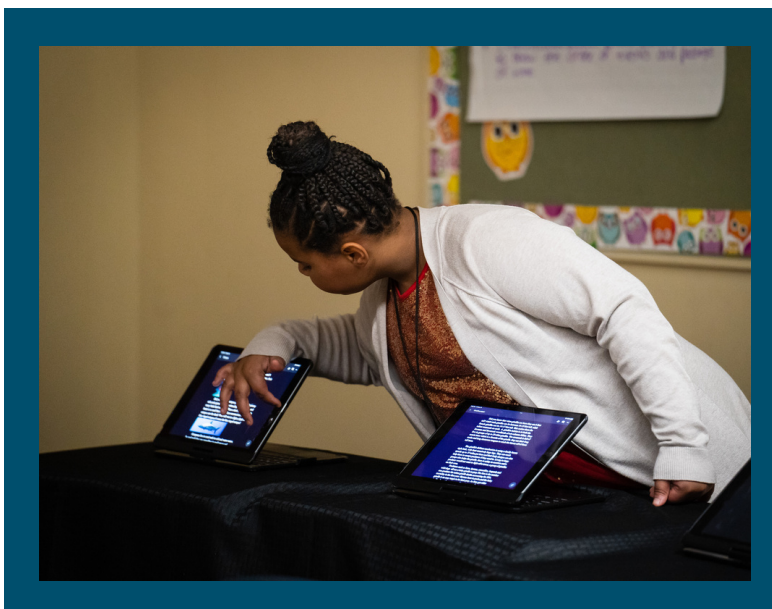
# HIGH QUALITY WORK



## GOLD DEN: GRADES 2-4 FOCUS: DEVELOPING RESEARCHERS, WRITERS, AND MATHEMATICIANS



## Expedition Sampling: Relationships in Biology



Bottom Left: 4th grade students created “Choose Your Own Adventure” style predator/prey stories and shared the with guests.

Top Right: 3rd grade students studied various frog species and created scientific drawings with informational writing about a specific type of frog.

Top Left: 2nd grade students studied plants and pollinators, creating scientific drawings with specific, accurate captions.

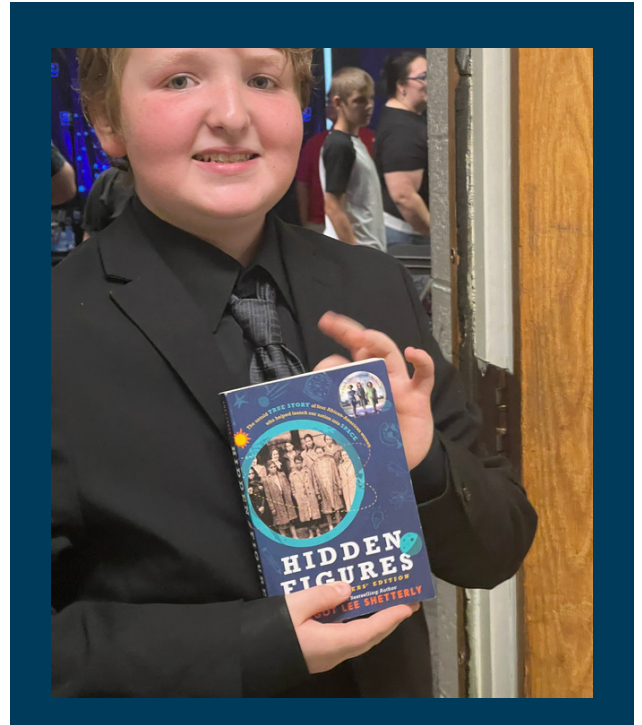
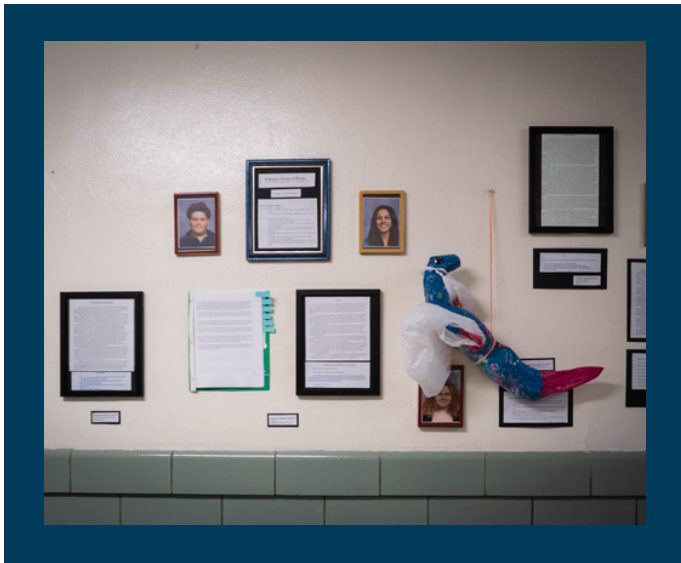


# HIGH QUALITY WORK



## ORANGE DEN: 5-8

FOCUS: APPLYING KNOWLEDGE & SKILLS TO BUILD A BETTER WORLD

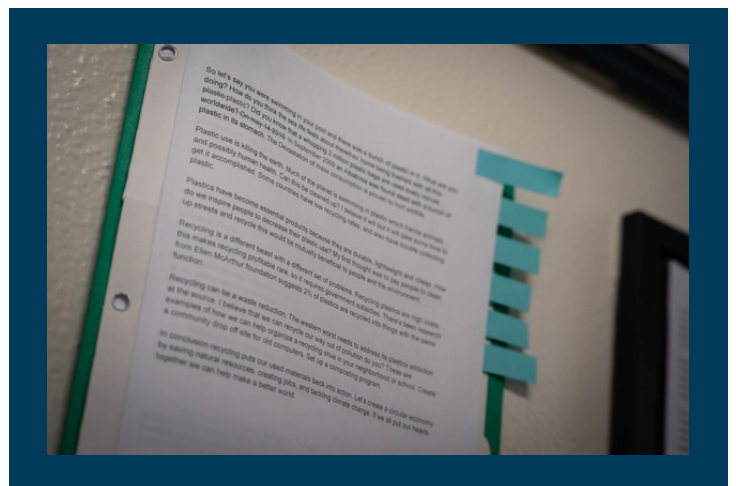


## Expedition Sampling: Seeking the Unknown

Top Left: Students research plastic disposal and the impact on marine life, complete with artistic models.

Top Right: Students learn about historical female scientists and the contributions made.

Bottom Right: Students create multiple drafts to learn the craft of writing well before transitioning to high school.



## Education Costs are Rising!

Donate through Givebutter on our website: [www.inspiremuncie.org](http://www.inspiremuncie.org)

Or, mail donations to  
2801 E. 16th Street  
Muncie, IN 47302



## THANK YOU!

We appreciate all the support we received from our dedicated community members and our generous donors.

### ANNUAL DONOR HONOR ROLL



#### FRIENDS

##### (CONTRIBUTE \$1-\$100)

Nova & Phillip Barnes  
Kara Baugues  
Oseye Boyd  
Alyia Carrigan  
Judith & Stephen Cooper  
Michael Cowherd  
Barbara & James Crookston  
Mary & Cornelius Dollison  
Aidan Draper  
Andrea Eads  
Constance Fullhart  
Shameka Gordon  
Watasha Barnes Griffin  
William Brandon Hayes  
Sarah Heflin  
Matt Howell  
Demetria Jackson  
Courtney Jarrett  
Lisa Lachapelle  
Linda Lambert

Beth Messner  
Brittany Pickett  
James Rediger  
Kelly Reyman  
Todd Roark  
Jerika Schultz  
Steven Smith  
Yvonne Thompson  
Ed Wolpert

#### ADVOCATES

##### (CONTRIBUTE \$101-\$500)

Stephen Bedi  
Jennifer & JD Collins  
Leslie Draper  
Donald Engel  
Patrick Fassnacht  
Erin Heflin  
Austin Johnson  
Jane McDowell  
Delk McNally LLP  
Teresa Moore  
Chris Mullett  
Angela Pacheco  
JoAnn & Wesley Rediger  
Marjorie Sonstroem  
Bobby Steele  
Cheryl Stein  
Doris Taylor  
Renee and David Tyler  
Sandra Ullom  
Servant HR  
Pam & Gary Wangler

#### MENTORS

##### (CONTRIBUTE \$501-\$1,500)

Hoosier Technology  
Edie & Keith Doubt  
Jen Doherty  
Robert Kersey  
Frances & Robert Nelson  
Beth & Phillip Pinegar  
Tom Schroeder

#### PARTNERS

##### (CONTRIBUTE \$1,501-\$5,000)

Linda & David Draper

#### SPONSORS

##### (CONTRIBUTE \$5,001-\$10,000)

#### PATRONS

##### (CONTRIBUTE over \$10,000)

Ball Brothers Foundation

### MARATHON GIVERS

The work of education reform and empowering students is lifelong work. As we celebrate 10 years serving our community, we want to take this moment to highlight committed financial partners over the years.

#### PARTNERS

##### (LIFETIME CONTRIBUTION

##### \$1,501-\$5,000)

Branam Family Charitable Fund  
Linda & David Draper  
Robert Kersey  
Tom Schroeder

#### SPONSORS

##### (LIFETIME CONTRIBUTION

##### \$5,001-\$10,000)

#### PATRONS

##### (LIFETIME CONTRIBUTION

##### over \$10,000)

Ball Brothers Foundation  
The Community Foundation of Muncie & Delaware County

*Providing an adventure-rich, competitive education is expensive.*

*We need your support!*

*Please consider scheduling a monthly contribution at <https://givebutter.com/JbVRpV>*